

# Alexander

4 Bedrooms / 3.5 Baths

3,226 sq ft

FARMHOUSE COLLECTION



Elevation FH-1



\*Information believed accurate but not warranted. All drawings and elevation renderings are artistic representations only. Floor plan details & final decisions to be made by Kerley Family Homes. This document is for informational purposes only and is subject to change without notice. Please contact onsite agent for details regarding availability, lots and options. Updated 1/18/23.

[KerleyFamilyHomes.com](https://www.KerleyFamilyHomes.com)

Information believed accurate but not warranted. Prices and offer subject to change without prior notice.



# Alexander

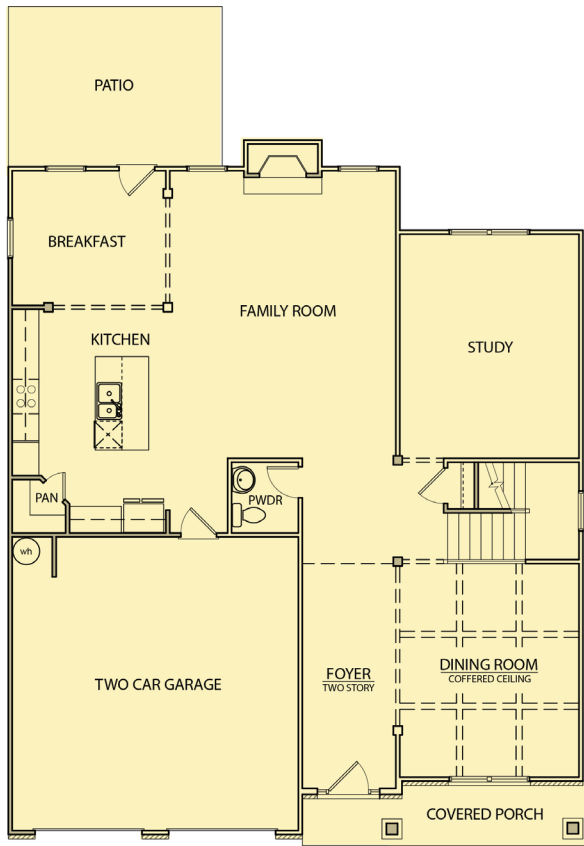
4 Bedrooms / 3.5 Baths

3,226 sq ft

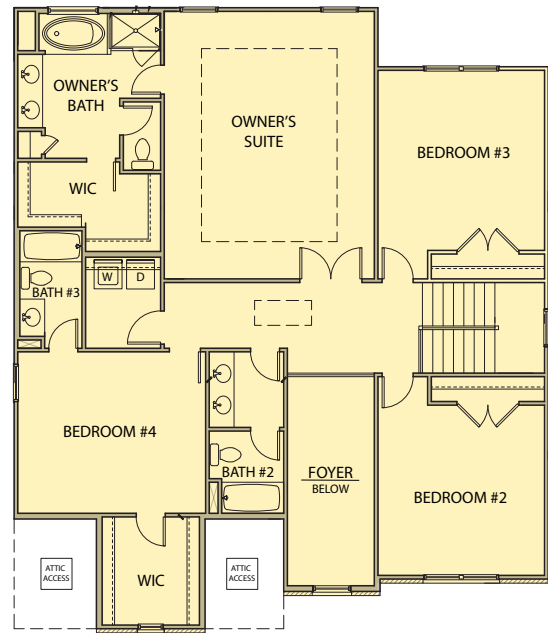
FARMHOUSE COLLECTION



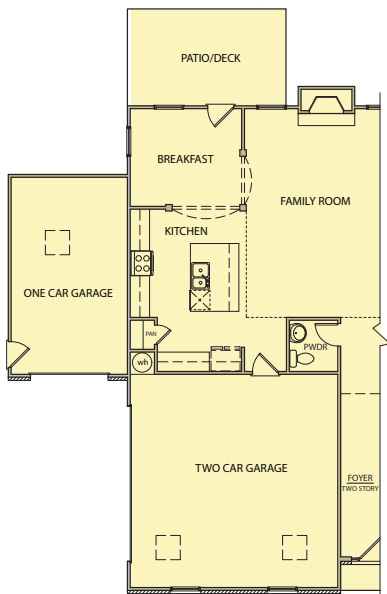
First Floor



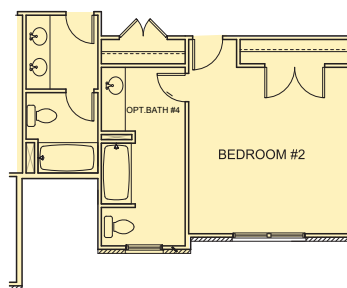
Second Floor



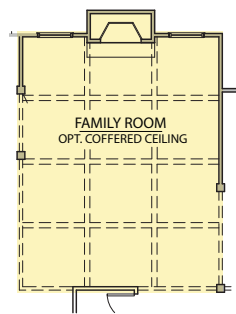
Opt. 3rd Garage Plan



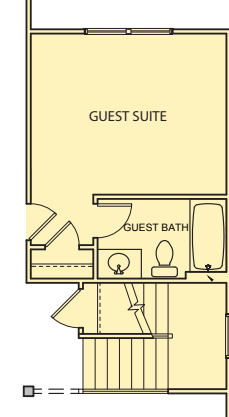
Opt. 4th Bath



Opt. Coffered Ceiling



Opt. Guest Suite



Opt. Covered Porch



\*Information believed accurate but not warranted. All drawings and elevation renderings are artistic representations only. Floor plan details & final decisions to be made by Kerley Family Homes. This document is for informational purposes only and is subject to change without notice. Please contact onsite agent for details regarding availability, lots and options. Updated 1/18/23.