

Parker

5 Bedrooms / 4 Baths

3,588 sq ft



Elevation AA



Elevation BB



Elevation CC



*Information believed accurate but not warranted. All drawings and elevation renderings are artistic representations only. Floor plan details & final decisions to be made by Kerley Family Homes. This document is for informational purposes only and is subject to change without notice. Please contact onsite agent for details regarding availability, lots and options. Updated 11/21/22.

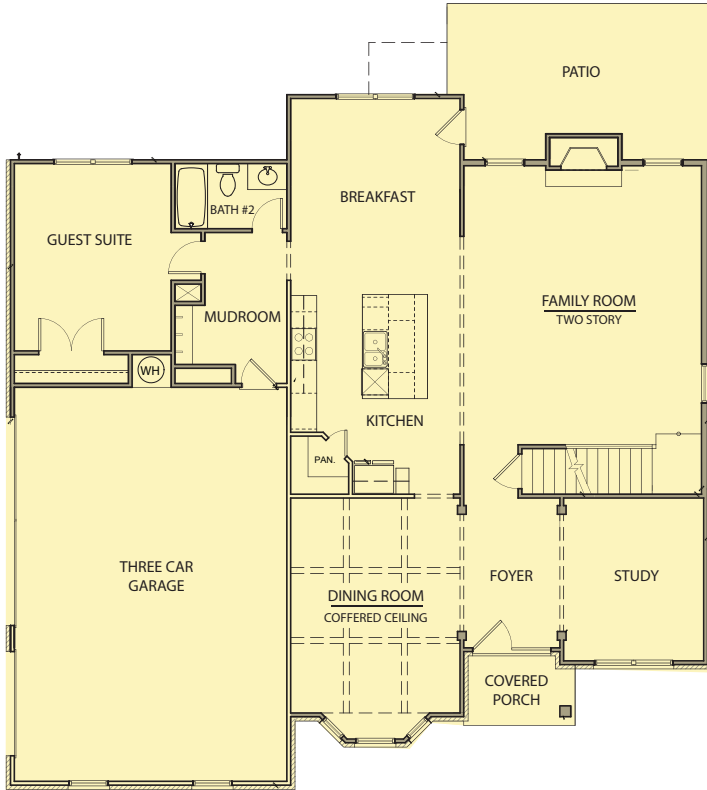
Parker

5 Bedrooms / 4 Baths

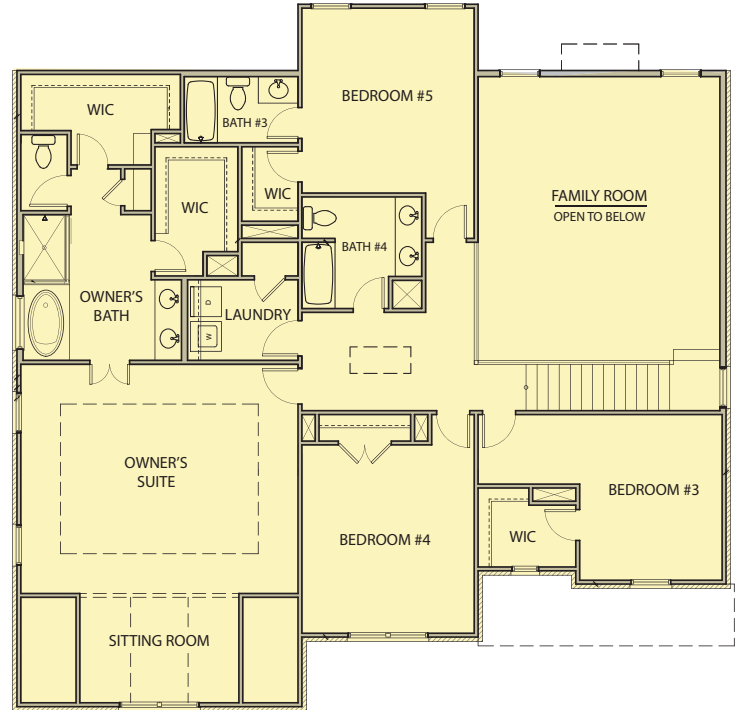
3,588 sq ft



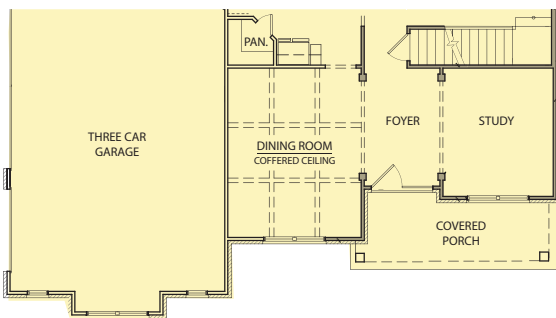
First Floor - Elevation AA +BB



Second Floor



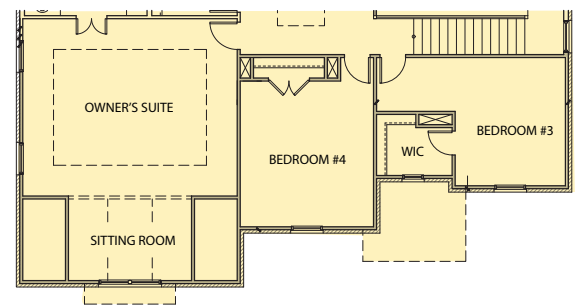
First Floor - Elevation CC



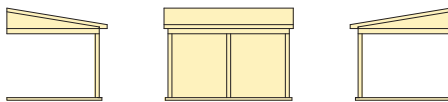
Opt. Bonus Room



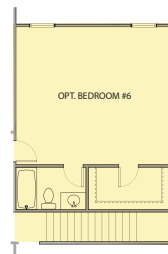
Second Floor - Elevation BB



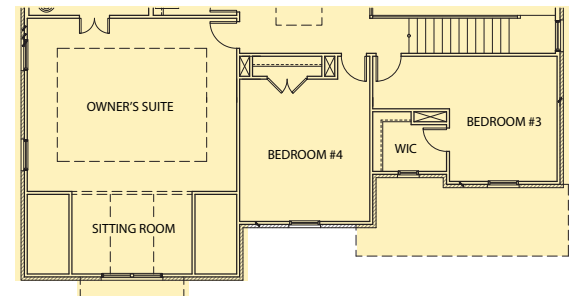
Opt. Covered Porch



Opt. Sixth Bedroom



Second Floor - Elevation CC



Opt. Covered Patio



*Information believed accurate but not warranted. All drawings and elevation renderings are artistic representations only. Floor plan details & final decisions to be made by Kerley Family Homes. This document is for informational purposes only and is subject to change without notice. Please contact onsite agent for details regarding availability, lots and options. Updated 11/21/22.